

BSMART



BSMART PRODUCT CATALOGUE

WWW.BSMART-KNX.COM

CONTENTS



03

ABOUT
THE COMPANY

04

WHY KNX

05

ABOUT BSMART
DEVICES

06-10

KNX SWITCHES

11

INFINITE TOUCH
INTERFACE SWITCHES

12

KNX
POWER SUPPLY

13-14

KNX MULTI
ACTUATORS

15

KNX DIMMER
ACTUATOR

16

KNX SWITCH
INTERFACE

17

KNX IP DEVICES

ABOUT US

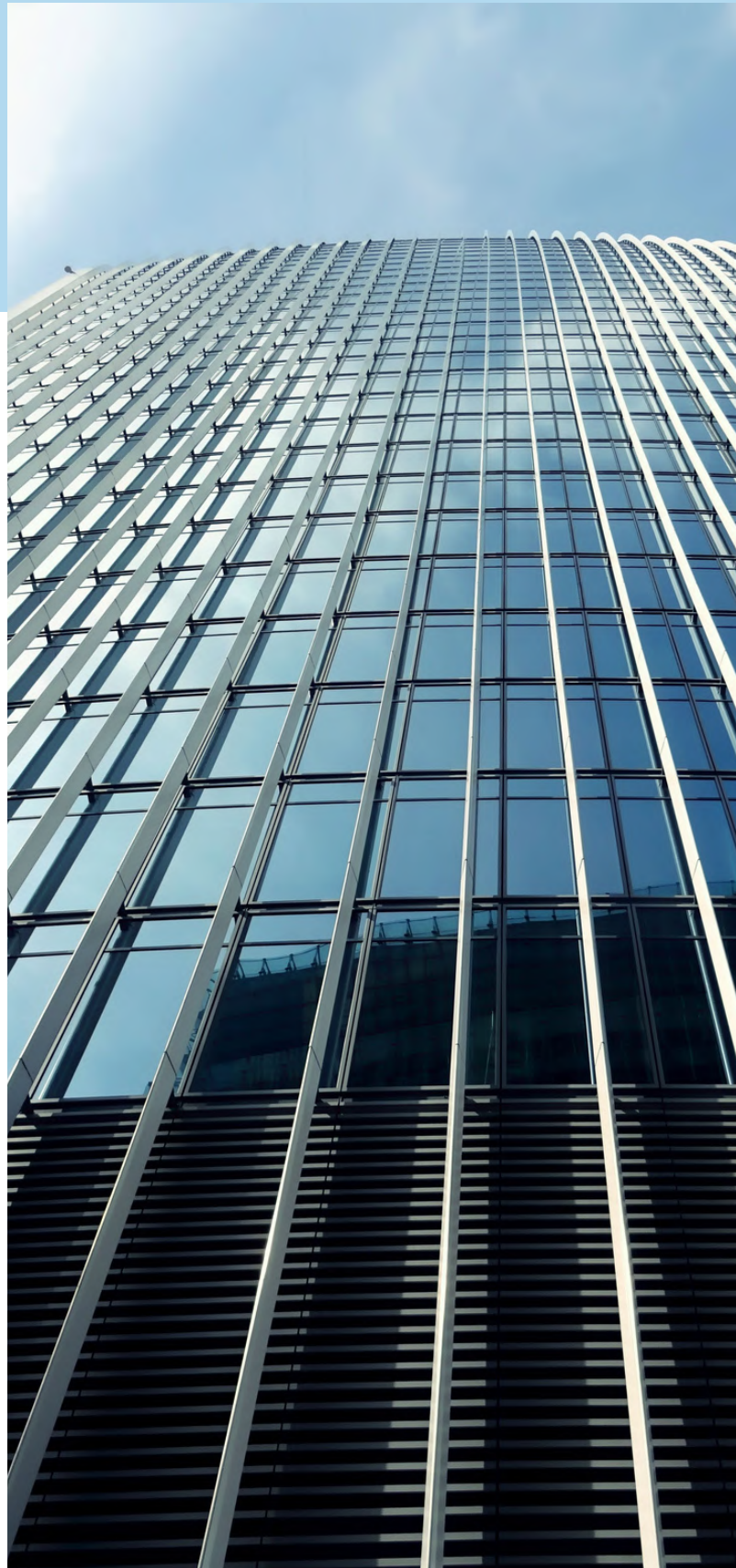
WE BELIEVE IN THE
TECHNOLOGY THAT MAKES
LIFE EASIER

BSMART® is developed on the base of the KNX standard, a system conform to national, European and international standards.

We build devices that make simpler gestures of everyday life. Our scenario is the world: homes, offices, public buildings, schools, hospitals, industries.

Our concept of home automation is supported and made possible by the KNX standard, which allows the decentralized and automated management of technological systems of all types and sizes.

We exploit the potential of the KNX system to ensure high quality standards for a project that we called BSMART.





WHY KNX

KNX IS THE WORLDWIDE STANDARD FOR HOME AND BUILDING CONTROL

KNX offers at the same time the reliability of a consolidated system, market leader for over twenty years, and the dynamic nature of a rapidly developing system, thanks to the contribution of manufacturers from different fields and to the constant widening of the supply in terms of products, functions and solutions.

10 good reasons to choose KNX products:

- KNX is a worldwide standard
- KNX is a system fully compliant with national, European and international standards
- KNX is available with thousands of devices produced by over 300 manufacturers
- KNX is open and interoperable
- KNX is a key factor in order to achieve higher energy efficiency in buildings
- KNX is a SELV system that reduces the electromagnetic fields in buildings
- KNX is a consolidated system based on a technology established on the market for 20 years and constantly under development
- KNX is suitable for both new construction and renovations
- KNX is a safe investment, thanks to the opening and interoperability of the standard
- KNX is a system designed, installed and commissioned by tens of thousands of skilled professionals

THE BSMART® DEVICES

The range of BSMART® KNX devices includes system devices, devices dedicated to single application functions and accessories.

System devices allow basic operation of the bus system, while the devices dedicated to single application functions are developed specifically to execute the command, control and/or monitoring the technical systems in the building, like lighting, heating or shading.

They include switching, control and display units, sensors and actuators, etc.

Each device is fitted internally with a communication module linking to the KNX bus.

All devices are realized in multiple mounting versions in accordance with their destination of use and with the main installation modality. The KNX certification guarantees the interoperability among the devices of different KNX manufacturers.

The entire procedure is disciplined by the certification system developed by the KNX Association and is based on conformity tests carried out by third-party laboratories.

The tests verify that the devices support the KNX protocol and that any information is coded in accordance with KNX specifications.

AESTHETE CLEAR TOUCH SWITCHES

Aesthete Clear Touch Switches are designed for the needs of modern buildings. The new generation of frameless design was designed according to the expectations of the architects. Elegant and trendy touch with glass design in your interior.

Aesthete Clear Touch - 8-fold pushbutton.

Finishing White Glass

Dimensions: 86 x 86 x 21.4 mm



AESTHETE CLEAR TOUCH SWITCHES

- Ultra slim and luxury design
- Tempered glass front plate with high touch sensitivity
- Label can be printed and customized with the attached PVC paper



Aesthete Clear Touch - 6-fold pushbutton.

Finishing White Glass

Dimensions: 86 x 86 x 21.4 mm

Aesthete Clear Touch - 4-fold pushbutton.

Finishing White Glass

Dimensions: 86 x 86 x 21.4 mm



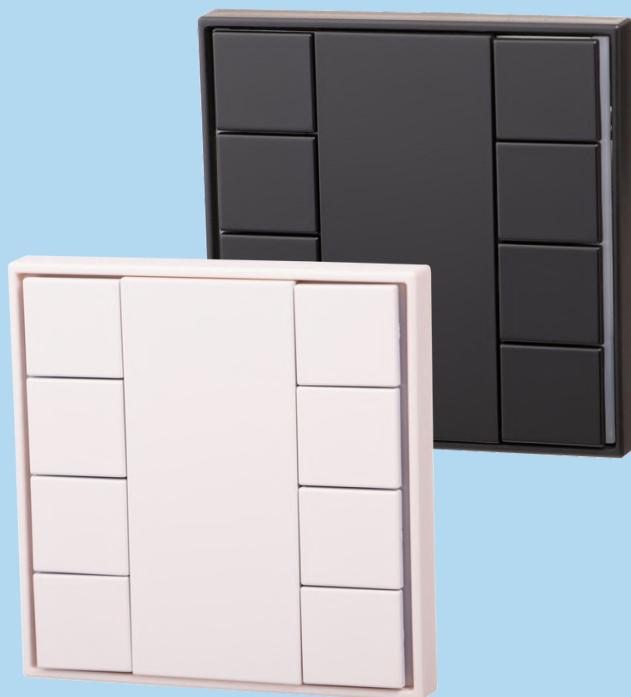
ZENITH PUSH SWITCHES

Elegant and refined.
The compactness that adapts to your style.

Zenith Push Switches - 8-fold pushbutton.

Finishing White/Black Plastic

Dimensions: 80 x 80 x 26.6 mm



ZENITH PUSH SWITCHES



Zenith Push Switches - 4-fold pushbutton.

Finishing White/Black Plastic
Dimensions: 80 x 80 x 26.6 mm

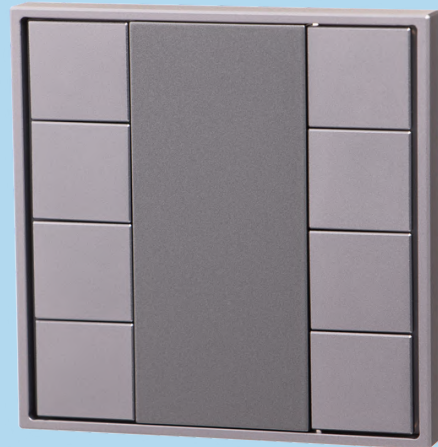


Zenith Push Switches - 4-fold pushbutton.

Finishing White/Black Plastic
Dimensions: 80 x 80 x 26.6 mm

ORE PUSH SWITCHES

Simple and linear.
An essential form that
suggests an idea of
reliability and precision.



**Ore Push Switches - 4-fold
pushbutton.**

High end metal finish
Dimensions: 80 x 80 x 26.6 mm



**Ore Push Switches - 8-fold
pushbutton.**

High end metal finish
Dimensions: 80 x 80 x 26.6 mm

INFINITE TOUCH INTERFACE SWITCHES

Elevate your user experience with the Infinite Touch interface switches, a masterpiece of design and innovation. This touch panel is meticulously crafted to offer both flexibility and convenience, making it the perfect addition to your control system.



Infinite Touch interface switches

Resolution of 480 x 480

Display 10 pages

Text support customization,
and Built-in temperature and
humidity sensor

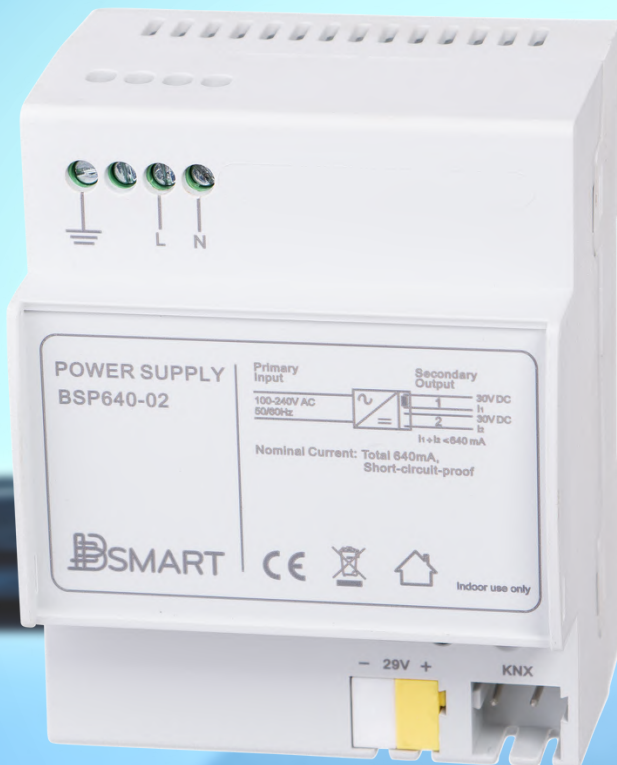
High-grade aluminum frame

Dimensions: 85 x 95 x 36mm



KNX POWER SUPPLY 640 MA

It is a efficiency and energy saving switching Power Supply with features of high efficiency, low noise, light weight, small size, high reliability, strong anti-interference and so on.



KNX MULTI ACTUATORS

The BSMART® Multi Actuator is an S-mode KNX modular device for panel mounting, which is able to convert electric signals in actions and therefore control motorized actuators. In order to function properly, the device has to receive a telegram from the bus, sent by a KNX sensor (for example a pushbutton, a sensor or another command/control device) or another KNX command device, which opens or closes one or more relays (such as blind control, etc.).



KNX MULTI ACTUATORS

Products tested and certified to guarantee the complete control over home and buildings according to KNX protocol, the worldwide standard for all applications in building automation.

KNX Multi Actuator 24 Gang

Can be used as Switch Actuator (max. 24-fold) or Shutter Actuator (max. 12-fold)

Dimensions: 24 outs 274x90x64 mm (WxHxD) → 15 DIN units



KNX Multi Actuator 16 Gang

Can be used as Switch Actuator (max. 16-fold) or Shutter Actuator (max. 8-fold)

Dimensions: 16 outs 171x90x64 mm (WxHxD) → 15 DIN units



KNX Multi Actuator 8 Gang

Can be used as Switch Actuator (max. 8-fold) or Shutter Actuator (max. 4-fold)

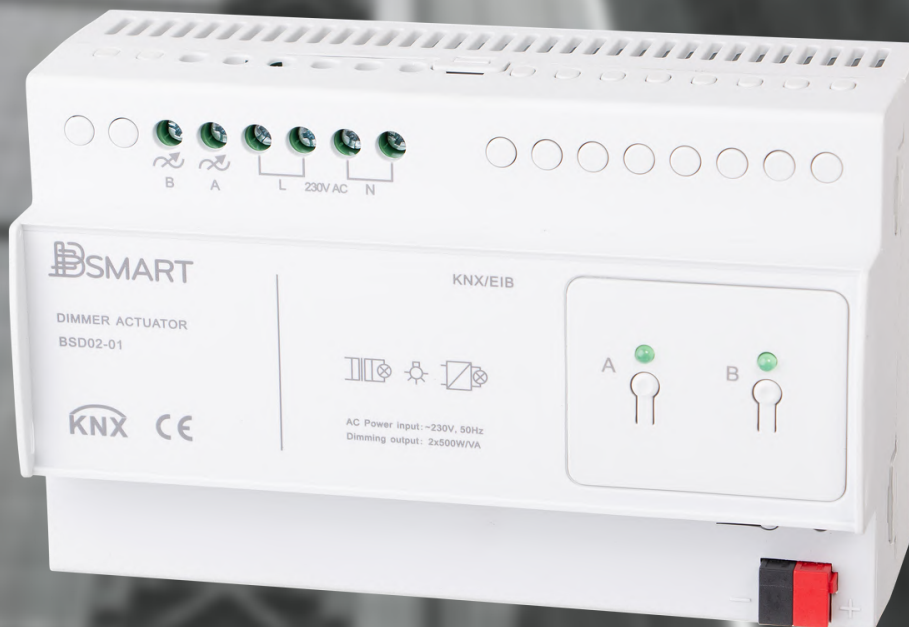
Dimensions: 8 outs 105x90x64 mm (WxHxD) → 15 DIN units



KNX 2-FOLD DIMMER ACTUATOR

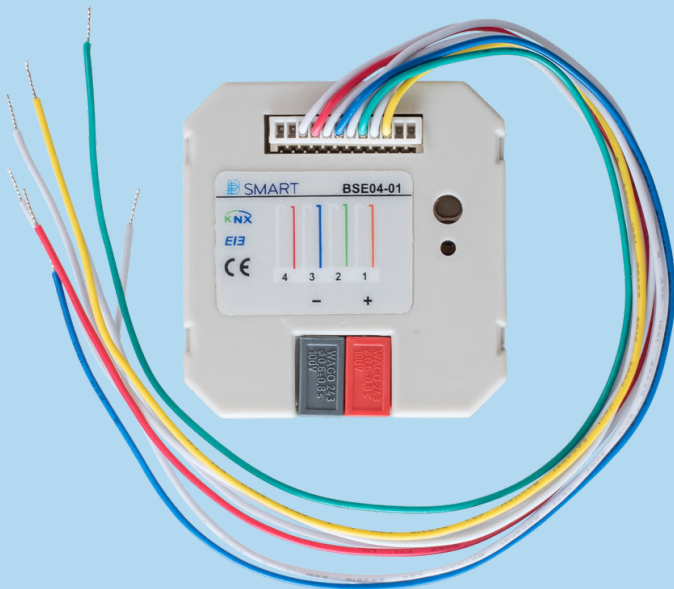
KNX certified device available with 2
channels

Mounting DIN Rail 144x90x65mm
(WxHxD)



KNX SWITCH INTERFACE

Push Button Interface is a KNX-certified device possessing KNX bus connection, LEDs, and physical addressing button.



KNX Switch Interface

Type of Inputs: Dry Contact Inputs

Dimensions: 40x10x40mm (HxWxD)

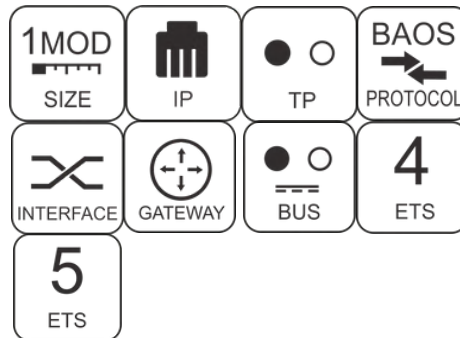
KNX IP

The new compact design has a width of only 1 module (18 mm) and is powered by the KNX bus.



KNX IP RTI

- Din rail mounted device, width 1 unit (18mm)
- Weight approx. 40g



KNX IP Interface C4

- Din rail mounted device, width 1 unit (18mm)
- Weight approx. 40g

